

PROPOSED MASTER PLAN
1:200

PRELIMINARY

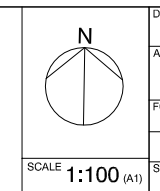
H		
G		
F		
E		
D		
C		
B		
A	5/12/2007	FIRST ISSUE
ED.	DATE	AMENDMENT

LEGEND

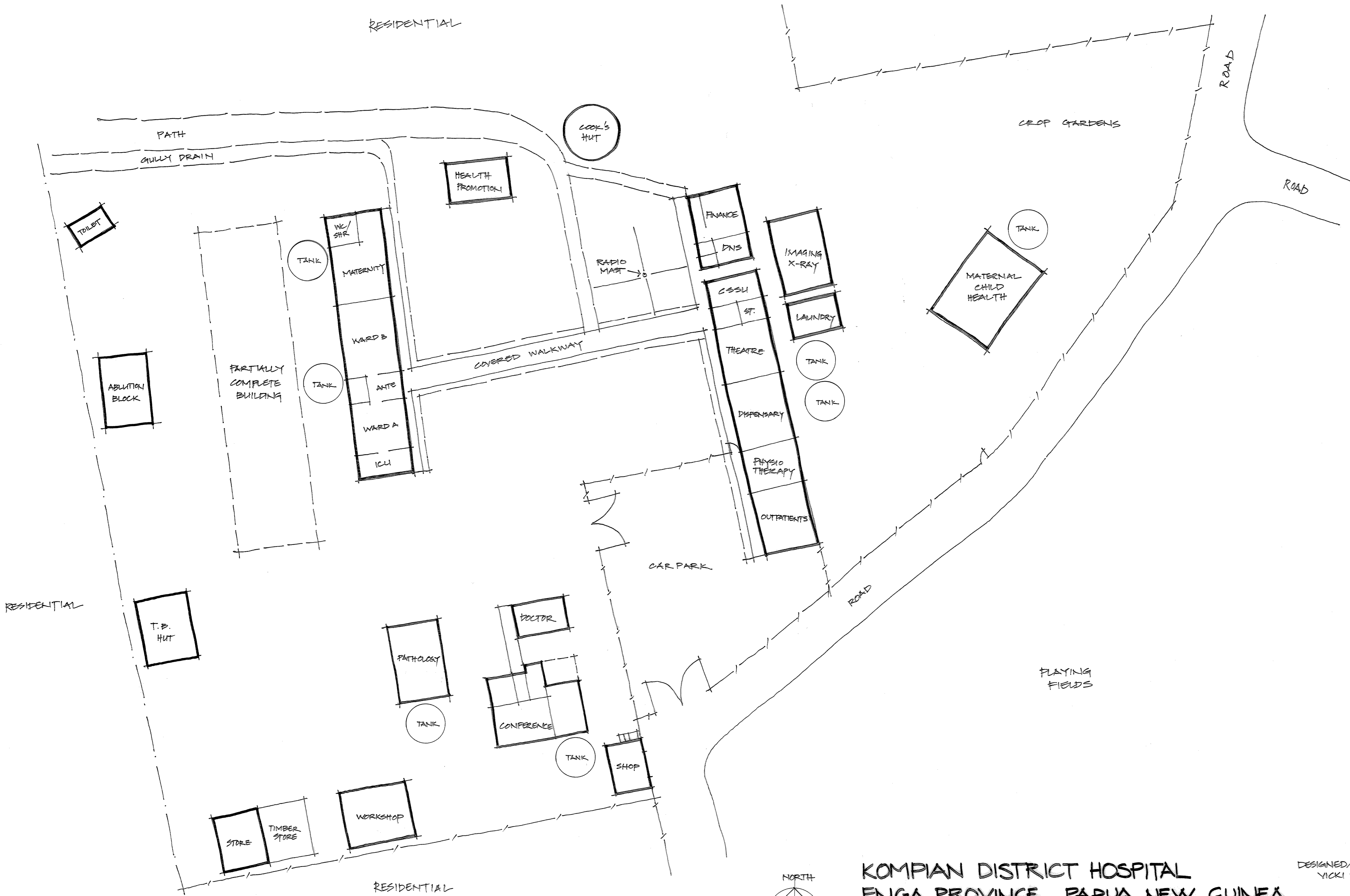
A	ACRYLIC	T	TIMBER
C	CRIMSAFE	L	LOUVRE
SS	SECURITY SCREEN	M	METAL
PP	PLASTER PARTITION		

carman **cs+a**
SURVEYORS **architects** **without** **frontiers**
surveying planning engineering tects australia

SCALE 1:200 (A1)

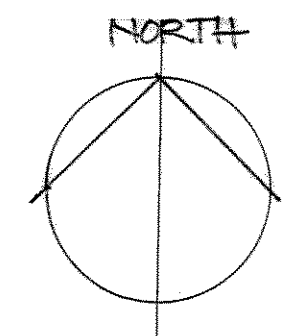


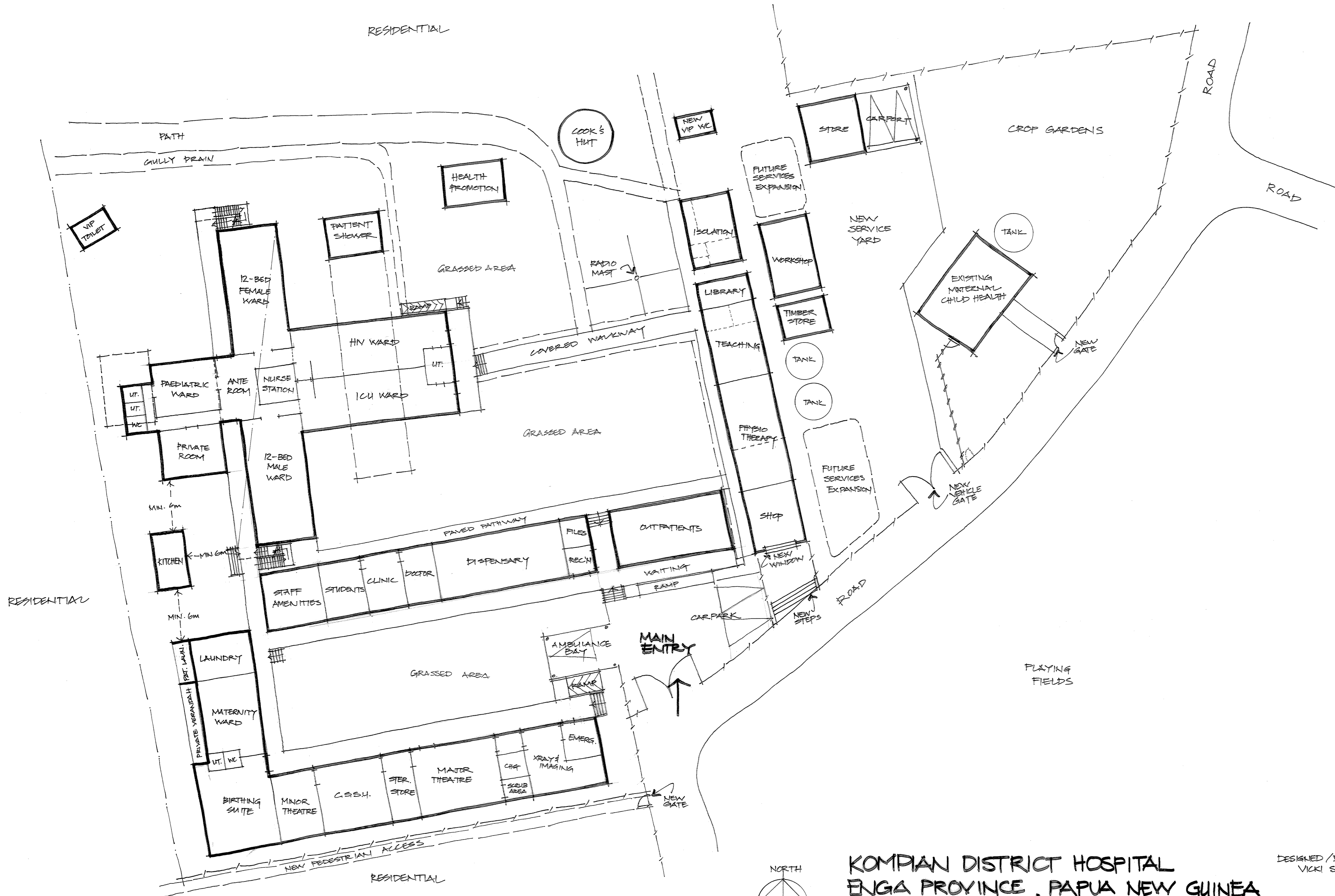
DRAWING	PROPOSED MASTERPLAN		SHEET NO.
ALTERATIONS TO	KOMPIAN DISTRICT HOSPITAL		
FOR	KOMPIAN ENGA, PUPUA NEW GUINEA		
	BAPTIST MEDICAL CENTRE		
	HOSPITAL PLANNER/ARCHITECT DENNIS SMALL		OF <u> </u>
STAGE	REV	DRAWING FILE	REV
1A		\\David\csa\Clients\Humanitarian Projects\AWF\KOMPIAN\Acad\Masterplan.dwg	A



KOMPIANG DISTRICT HOSPITAL
 ENGA PROVINCE, PAPUA NEW GUINEA
EXISTING SITE PLAN

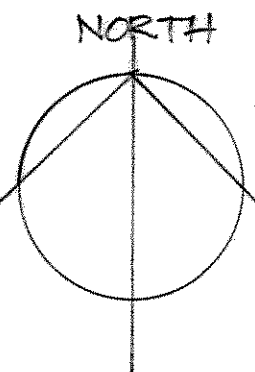
DESIGNED/DRAWN:
 VICKI S. LEO
 DATE:
 NOVEMBER 2006
 (A1) SCALE 1:200

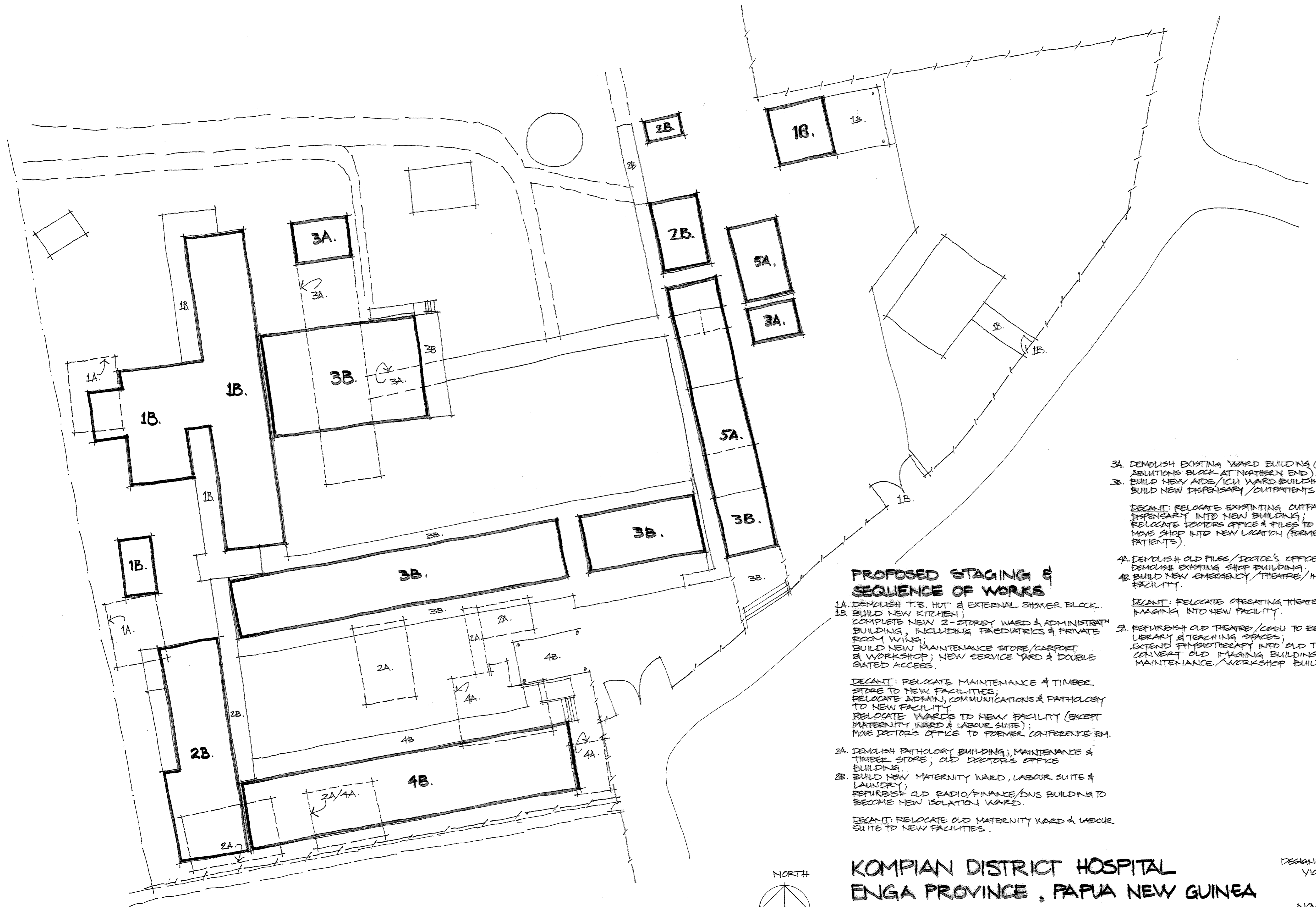




KOMPIANG DISTRICT HOSPITAL
 ENGA PROVINCE, PAPUA NEW GUINEA
MASTER PLAN

DESIGNED / DRAWN:
 VICKI S. LEO
 DATE:
 NOVEMBER 2006
 (A1) SCALE 1:200





PROPOSED STAGING & SEQUENCE OF WORKS

- 1A. DEMOLISH T.B. HUT & EXTERNAL SHOWER BLOCK.
 - 1B. BUILD NEW KITCHEN; COMPLETE NEW 2-STORY WARD & ADMINISTRATION BUILDING, INCLUDING PAEDIATRICS & PRIVATE ROOM WING; BUILD NEW MAINTENANCE STORE/CARPORT & WORKSHOP; NEW SERVICE YARD & DOUBLE GATED ACCESS.
 - 2A. DEMOLISH PATHOLOGY BUILDING; MAINTENANCE & TIMBER STORE; OLD DOCTOR'S OFFICE BUILDING.
 - 2B. BUILD NEW MATERNITY WARD, LABOUR SUITE & LAUNDRY; REFURBISH OLD RADIO/FINANCE/INS BUILDING TO BECOME NEW ISOLATION WARD.
 - 3A. DEMOLISH EXISTING WARD BUILDING (LEAVING ABUTMENTS BLOCK AT NORTHERN END).
 - 3B. BUILD NEW AIDS/ICU WARD BUILDING; BUILD NEW DISPENSARY/OUTPATIENTS BUILDING.
 - 4A. DEMOLISH OLD FILES/DOCTOR'S OFFICE BUILDING. DEMOLISH EXISTING SHOP BUILDING.
 - 4B. BUILD NEW EMERGENCY/THEATRE/IMAGING/LESSU FACILITY.
 - 5A. REFURBISH OLD THEATRE/LESSU TO BECOME NEW LIBRARY & TEACHING SPACES; EXTEND PHYSIOTHERAPY INTO OLD THEATRE SPACE; CONVERT OLD IMAGING BUILDING TO MAINTENANCE/WORKSHOP BUILDING.
- DECANT: RELOCATE MAINTENANCE & TIMBER STORE TO NEW FACILITIES; RELOCATE ADMIN, COMMUNICATIONS & PATHOLOGY TO NEW FACILITY; RELOCATE WARDS TO NEW FACILITY (EXCEPT MATERNITY WARD & LABOUR SUITE); MOVE DOCTOR'S OFFICE TO FORMER CONFERENCE RM.
- DECANT: RELOCATE EXISTING OUTPATIENTS/DISPENSARY INTO NEW BUILDING; RELOCATE DOCTOR'S OFFICE & FILES TO NEW BUILDING; MOVE SHOP INTO NEW LOCATION (FORMERLY OUT-PATIENTS).
- DECANT: RELOCATE OPERATING THEATRES, CSSU & IMAGING INTO NEW FACILITY.
- DECANT: RELOCATE OLD MATERNITY WARD & LABOUR SUITE TO NEW FACILITIES.

**KOMPIAN DISTRICT HOSPITAL
ENGA PROVINCE, PAPUA NEW GUINEA
STAGING PLAN**

DESIGNED/DRAWN:
VICKI S. LEO
DATE:
NOVEMBER 2006
(A1) SCALE 1:200